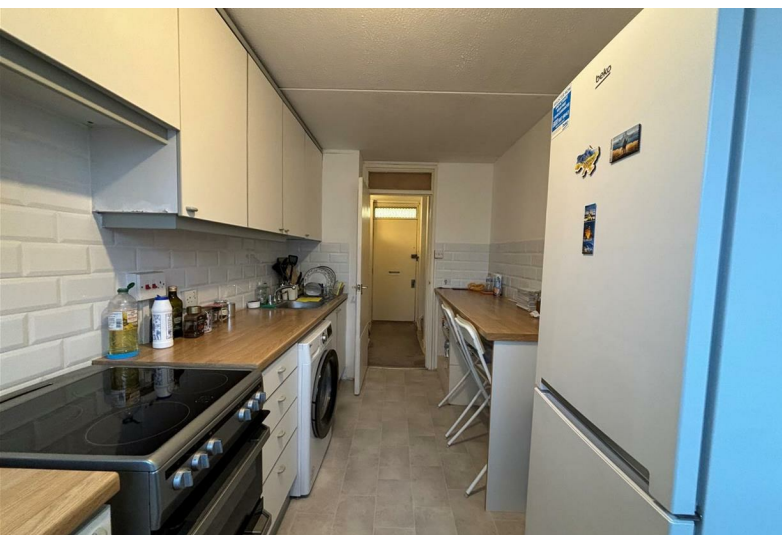


# Lucas Court | , SW11



**£1,950 PCM**

- Large Split Level Flat • Ex-Local Authority • 2 Double Bedrooms • Large Reception Room • Separate Kitchen • Part Furnished • Ideal for 2 Professional Sharers • Short Walk To Battersea Power Station (Northern Line) • Close to Chelsea Bridge and Battersea Park • Wandsworth Council Tax Band A

# Lucas Court | , SW11

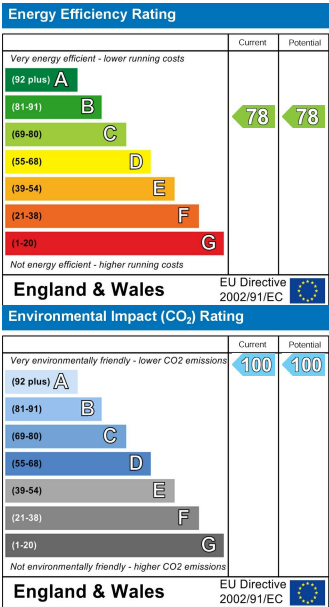


A Large split level apartment located on the 7th floor of a well maintained ex-local authority building, just south of the wide open space of Battersea Park, a short walk from Chelsea Bridge.

Carpeted throughout the flat comprises good size bright reception room with dining space, separate kitchen, and upstairs 2 double bedrooms, bathroom and W.C,

Benefits from excellent transport links with both Queenstown Road and Battersea Park Stations within 5 minutes walk, (10 minutes to Waterloo and 5 minutes to Victoria) as well as the new Northern Line Tube Stop at Battersea Power Station. Also has choice of good buses into the West End, Westminster and the City. off Street resident parking permit available on application through Wandsworth.

Wandsworth Council Tax Band A, Unfurnished/Part Furnished. Available 3rd February 2023.



These particulars are designed to provide a guideline only and cannot be relied upon as a statement of fact. The description represents the opinion of the author and is not intended to provide false or misleading information. Any prospective purchaser should make further checks on its accuracy. All measurements are approximate and floorplans are for representation only.

